



# Thermia WT-V 200



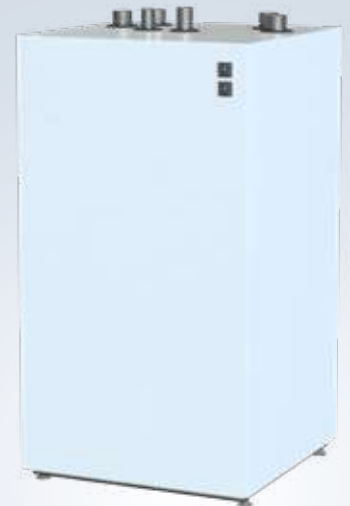
WT-V 200

## Volume tank especially designed for heat pump drift

**Thermia WT-V 200** is a 200-litre volume tank especially designed for heat pump operation. It can be used for volume boost, flow equalisation and reducing potential clicking in the heating system.

Thermia WT-V 200 consists of one insulated steel container with four connections at the top, for various operating alternatives, which makes it extra easy to adapt to various types of heating systems.

The Thermia series contains the following volume tanks: WT-V 100, WT-V 200, WT-V 300, WT-V 500, WT-V 750 and WT-V 1000. Their names describe the volume of the tanks in litres.



C

Energy efficiency class for water heater

# Technical data WT-V 200

## Connections WT-V 200

- 1 Expansion/Venting, DN25 int.
- 2 Connections (4x), DN50 int.
- 3 Temperature sensor conn. DN20 int.
- 4 Drainage, DN20 int.
- 5 Temperature sensor pipe (2x),  $\varnothing 9$  int.
- 6 Diffuser
- 7 Connection, DN50

WT-V 200	
Storage volume V (litres)	204,4
Test pressure	4,3 bar
Working pressure	3 bar
Max. temperature (°C)	100 °C
Standing loss S <sup>1</sup>	65
Energy efficiency class	C
Height (mm)	1153
Width (mm)	600
Depth (mm)	600
Weight	68 kg

1) According to EN 12897:2016

Required ceiling height for tilting: min. 1950 mm

